



Company : Apache

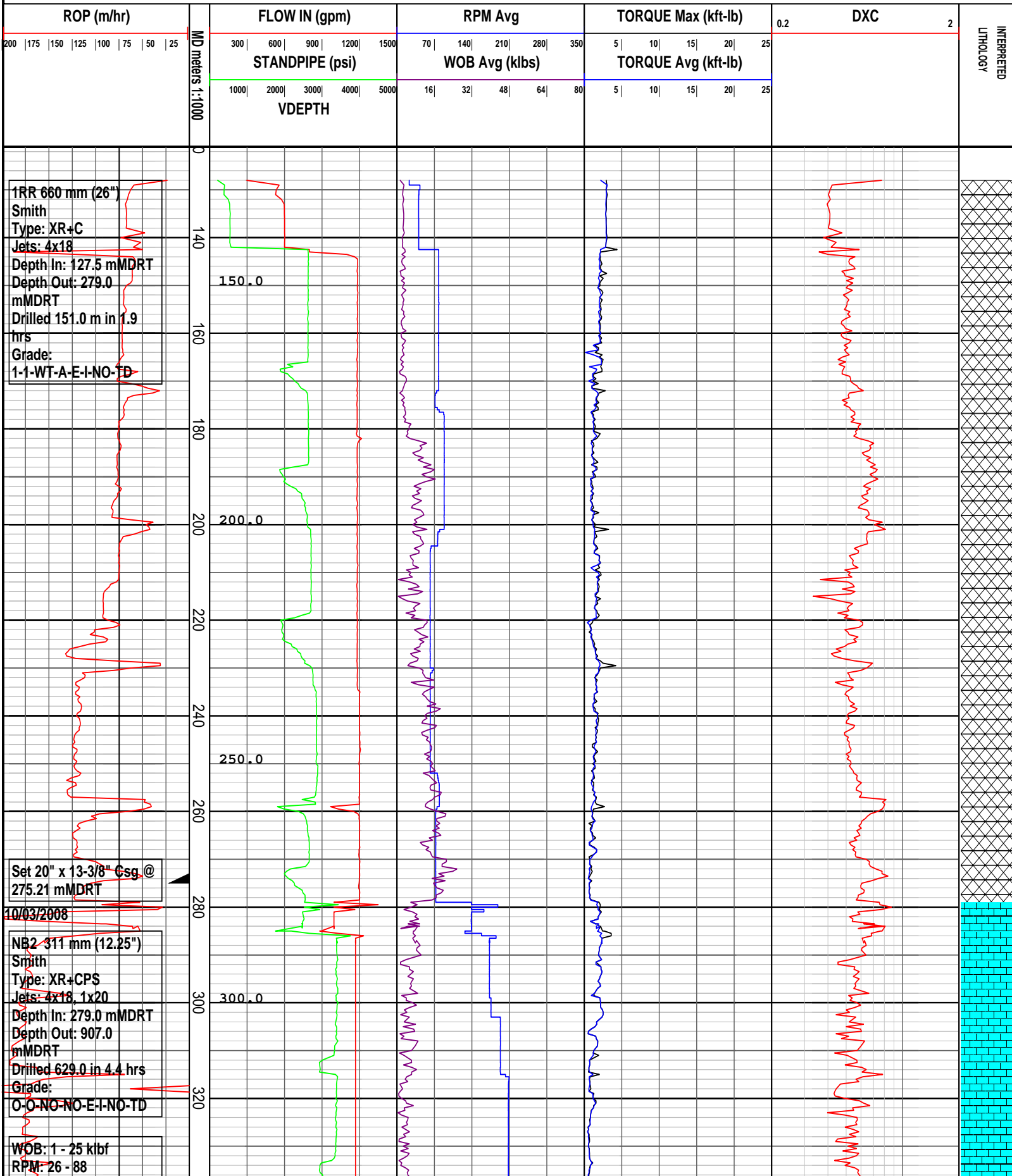
Well : Coelacanth-1

Interval : 121.00 - 2439.58 meters

Created : 20/Mar/2008 7:03:13 AM

INTEQ

### DRILLING DATA PLOT



1RR 660 mm (26")  
 Smith  
 Type: XR+C  
 Jets: 4x18  
 Depth In: 127.5 mMDRT  
 Depth Out: 279.0 mMDRT  
 Drilled 151.0 m in 1.9 hrs  
 Grade: 1-1-WT-A-E-I-NO-TD

Set 20" x 13-3/8" Csg @ 275.21 mMDRT  
 10/03/2008

NB2 311 mm (12.25")  
 Smith  
 Type: XR+CPS  
 Jets: 4x18, 1x20  
 Depth In: 279.0 mMDRT  
 Depth Out: 907.0 mMDRT  
 Drilled 629.0 in 4.4 hrs  
 Grade: O-O-NO-NO-E-I-NO-TD

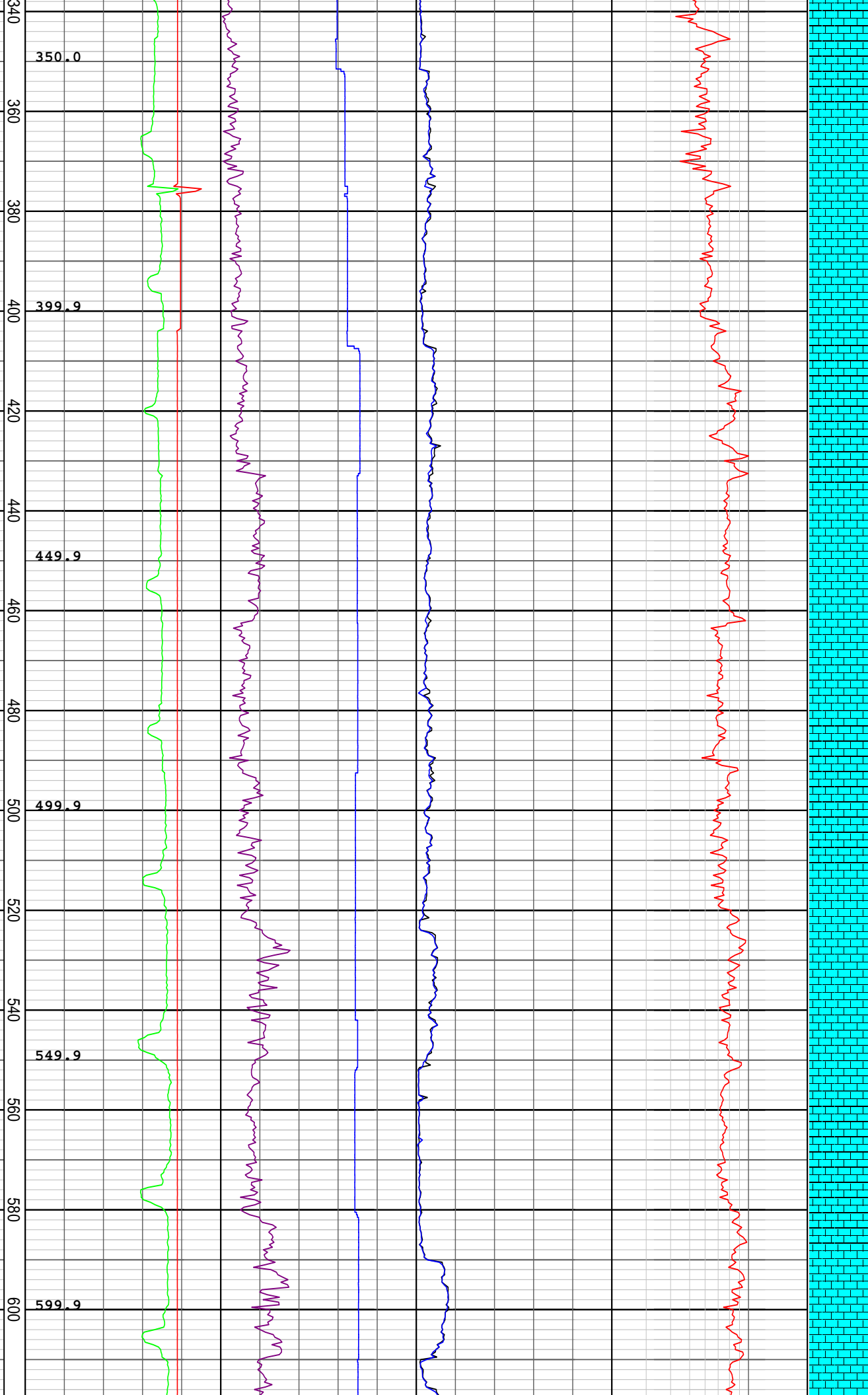
WOB: 1 - 25 klbf  
 RPM: 26 - 88  
 CFM: 891 - 1310

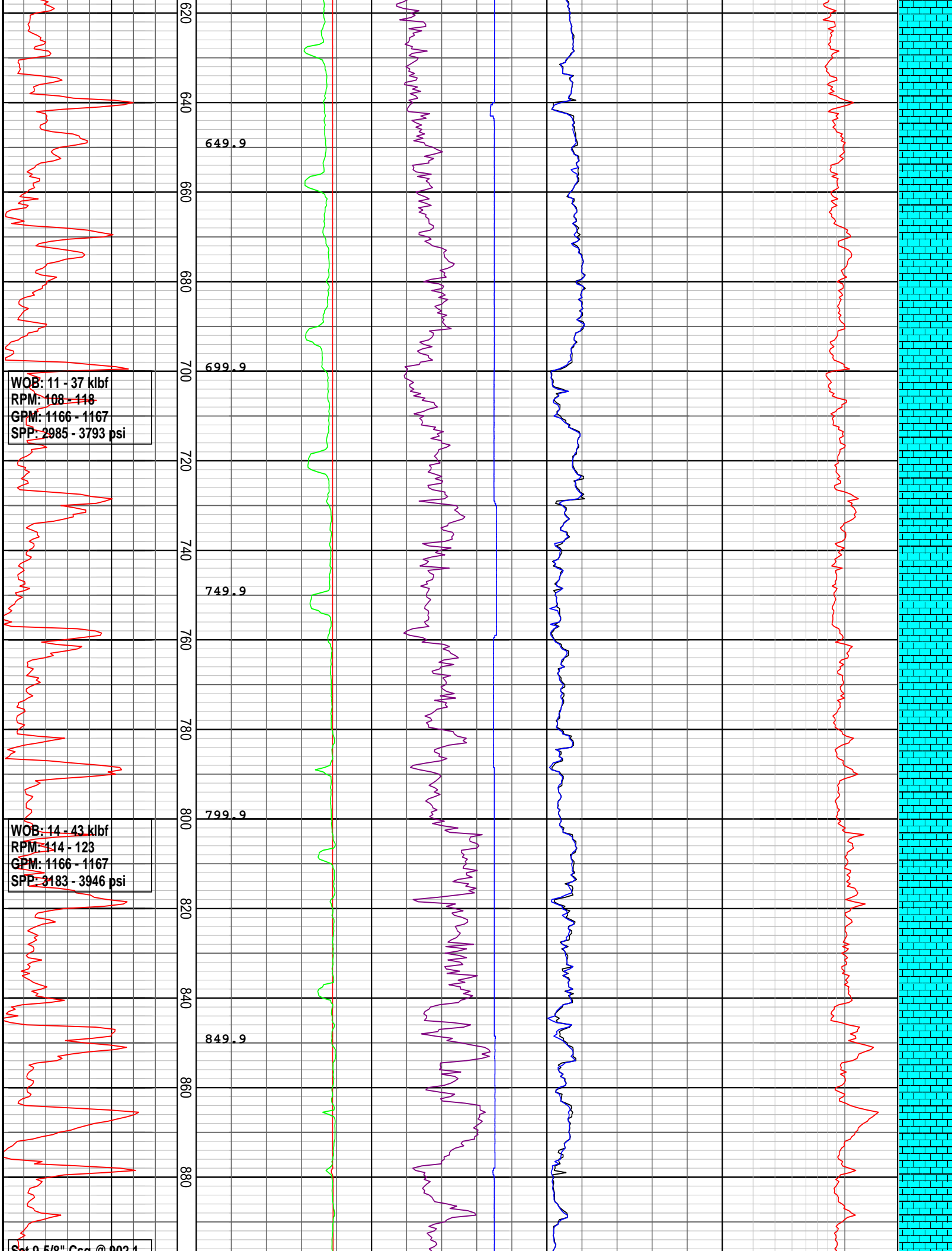
GPM: 881 - 1349  
SPP: 1758 - 3759 psi

WOB: 1 - 10 kJbf  
RPM: 48 - 96  
GPM: 1139 - 1191  
SPP: 2929 - 3110 psi

WOB: 4 - 18 kJbf  
RPM: 96 - 120  
GPM: 1163 - 1191  
SPP: 3041 - 3599 psi

WOB: 7 - 28 kJbf  
RPM: 112 - 121  
GPM: 1166 - 1168  
SPP: 2885 - 3737 psi





649.9

699.9

749.9

799.9

849.9

WOB: 11 - 37 klb  
RPM: 108 - 118  
GPM: 1166 - 1167  
SPP: 2985 - 3793 psi

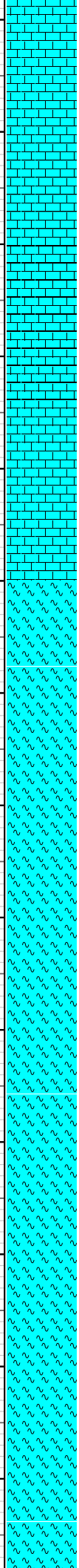
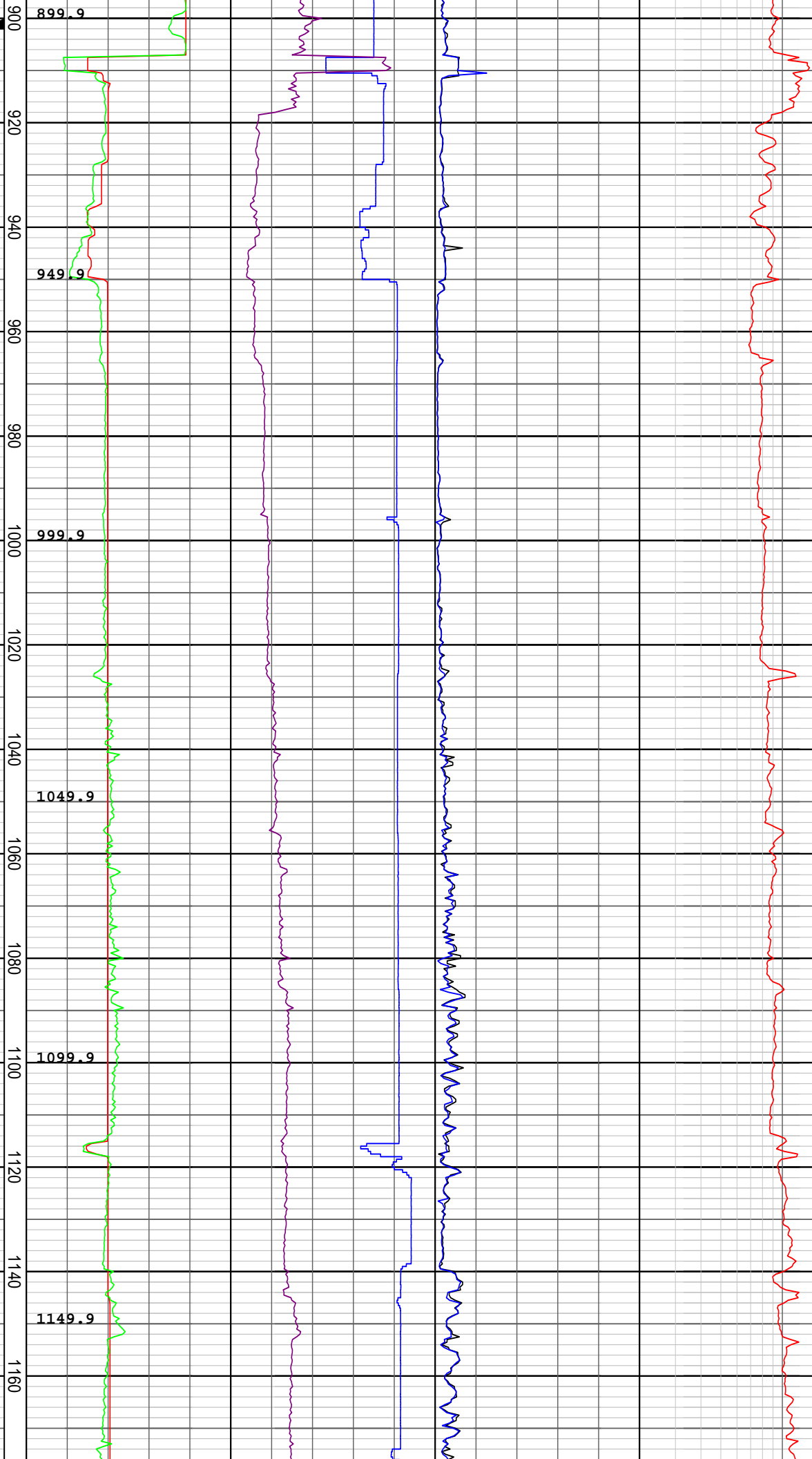
WOB: 14 - 43 klb  
RPM: 114 - 123  
GPM: 1166 - 1167  
SPP: 3183 - 3946 psi

Set 0.5/0" Csg @ 0021

Size 9-3/8 CSg @ 902.1  
mMDRT  
13/03/2008  
NB3 216 mm (8.5")  
Reed  
Type: RSX661B  
Jets: 4x14, 1x15  
Depth In: 907.0 mMDRT  
Depth Out: 1998.0  
mMDRT  
Drilled 1091 in 27.9 hrs  
Grade:  
1-1-BU-A-X-I-CT-PR  
WOB: 18 - 54 klb  
RPM: 113 - 123  
GPM: 1155 - 1171  
SPP: 3463 - 3979 psi

WOB: 6 - 63 klb  
RPM: 37 - 123  
GPM: 446 - 1171  
SPP: 909 - 3900 psi

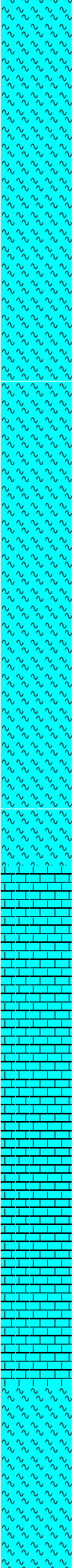
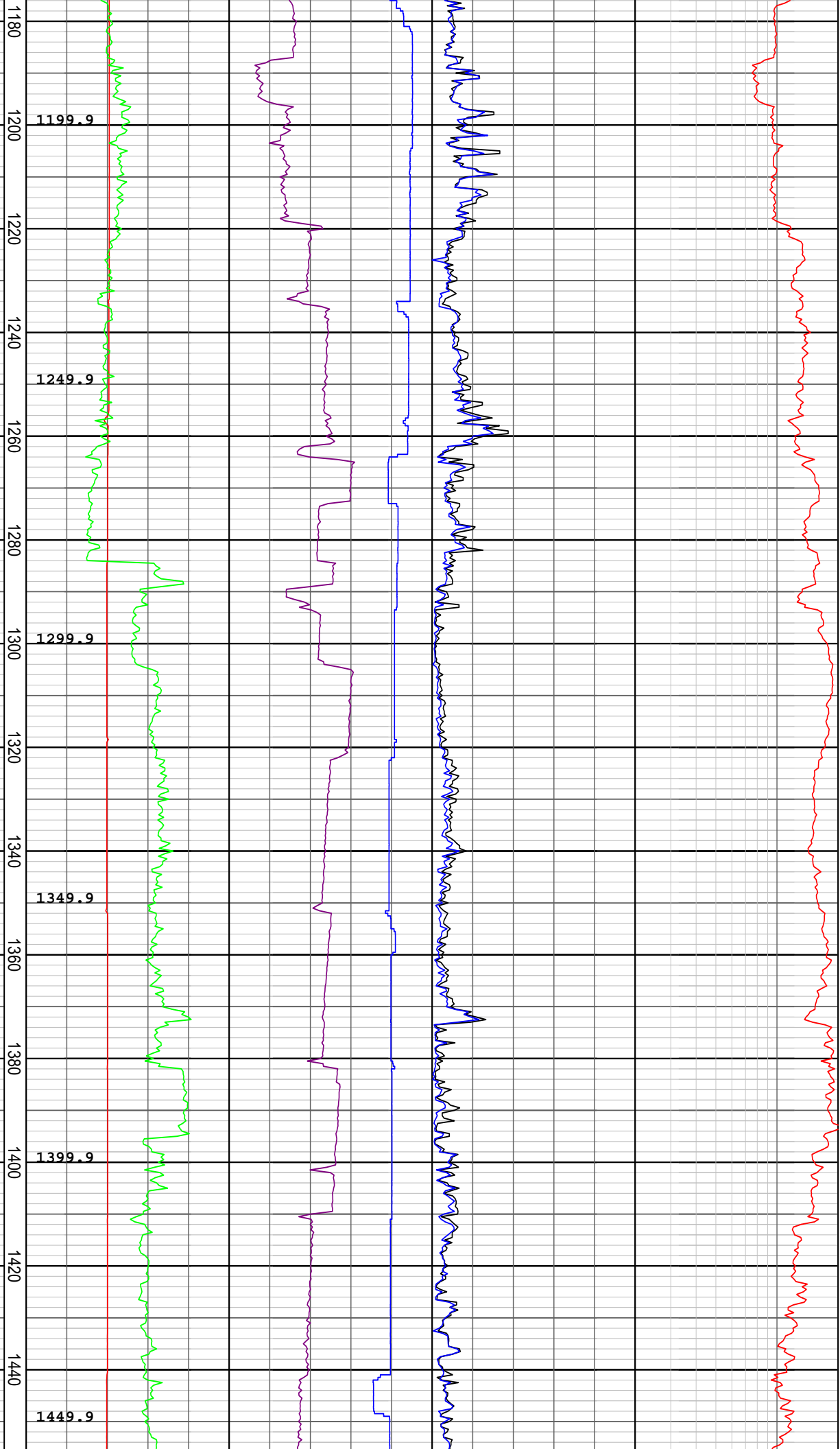
WOB: 14 - 25 klb  
RPM: 37 - 123  
GPM: 590 - 596  
SPP: 1642 - 2374 psi



WOB: 10 - 27 klbf  
RPM: 99 - 144  
GPM: 440 - 614  
SPP: 1389 - 2575 psi

WOB: 15 - 49 klbf  
RPM: 105 - 144  
GPM: 576 - 696  
SPP: 1464 - 3880 psi

WOB: 30 - 49 klbf  
RPM: 105 - 118  
GPM: 588 - 608  
SPP: 2588 - 4064 psi



17/03/2008

WOB: 24 - 42 kbf  
RPM: 81 - 112  
GPM: 594 - 602  
SPP: 2565 - 3483 psi

WOB: 23 - 41 kbf  
RPM: 78 - 124  
GPM: 490 - 610  
SPP: 2227 - 3596 psi

WOB: 20 - 43 kbf  
RPM: 18 - 131  
GPM: 500 - 596  
SPP: 2109 - 2914 psi

1460  
1480  
1500  
1520  
1540  
1560  
1580  
1600  
1620  
1640  
1660  
1680  
1700  
1720

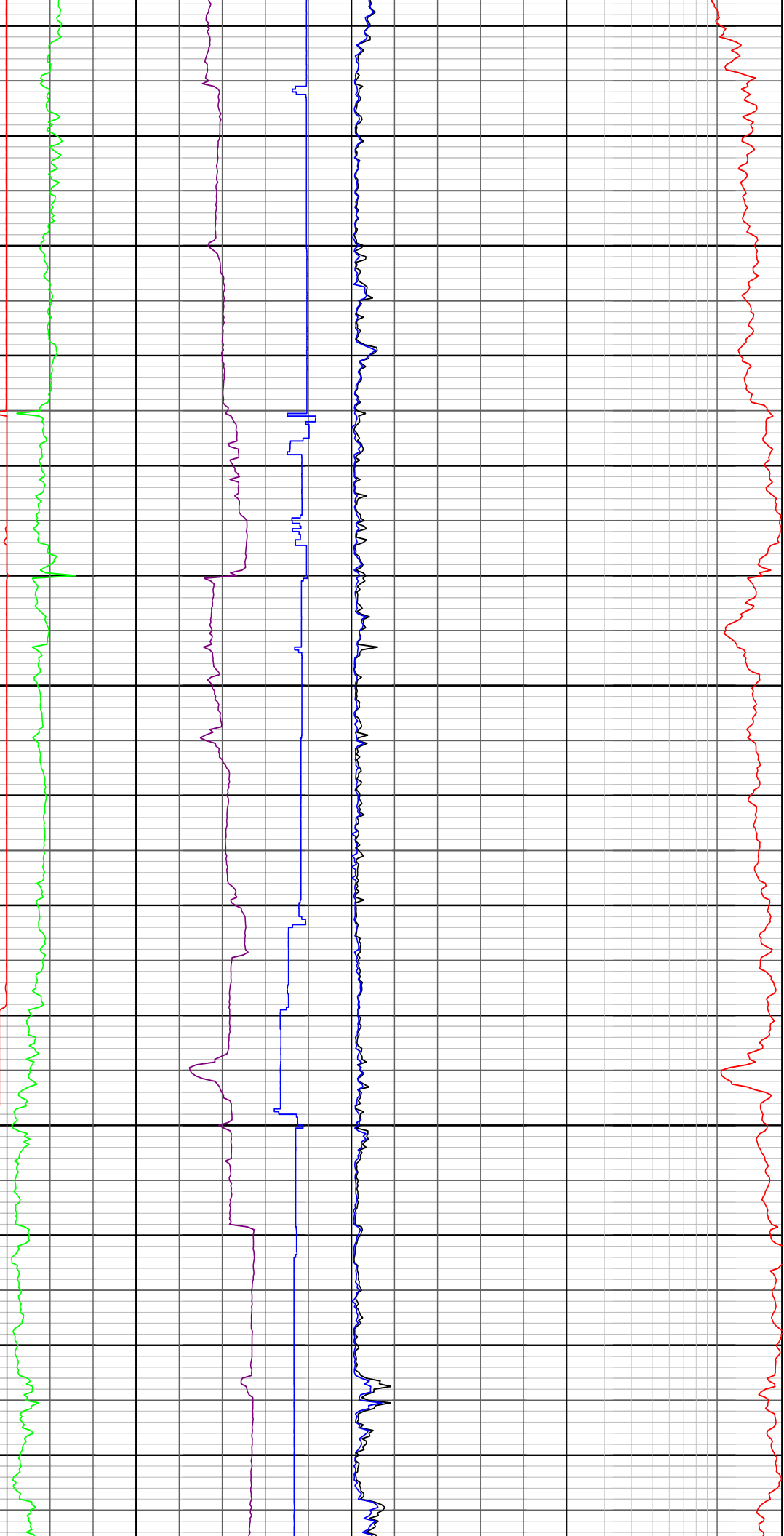
1499.8

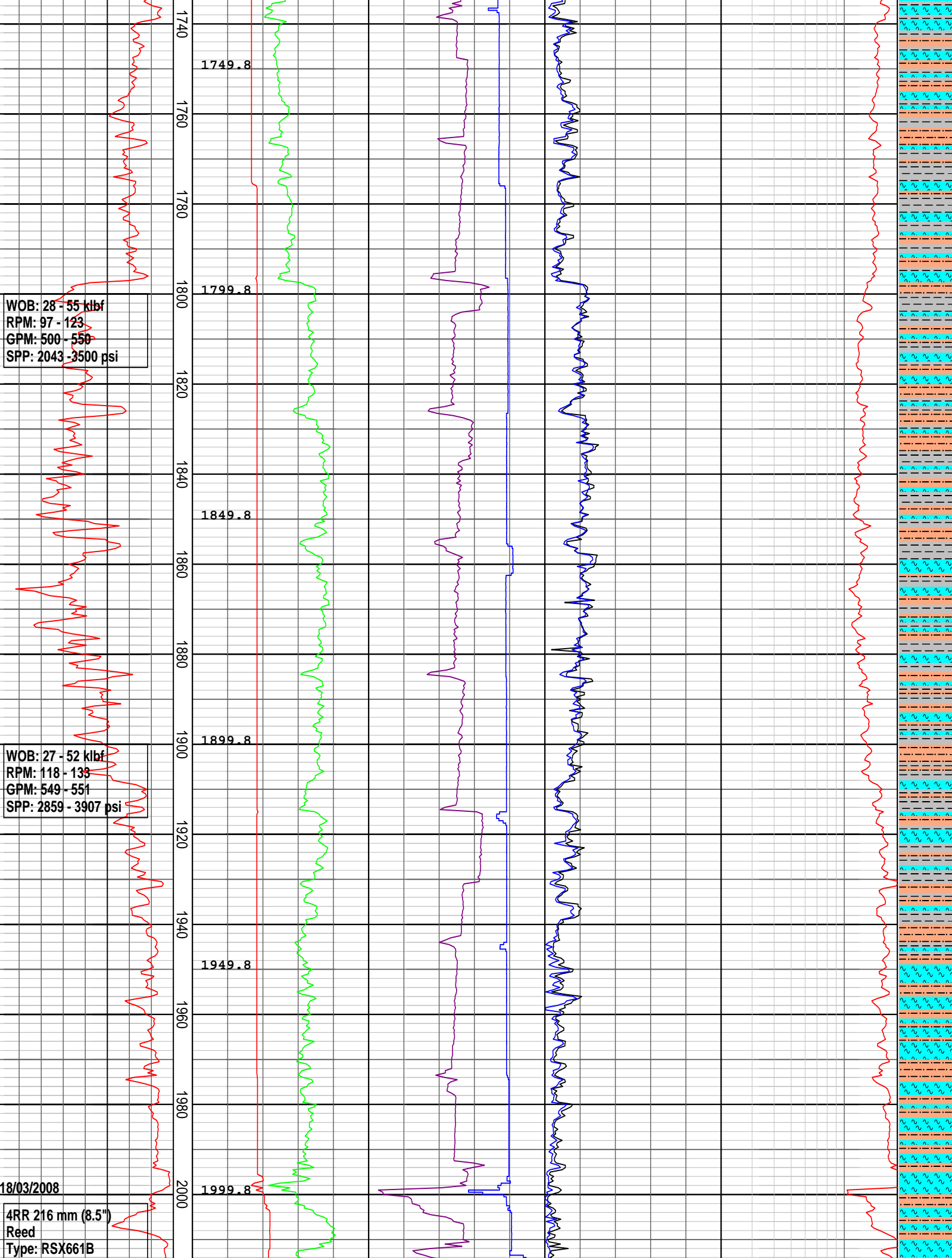
1549.8

1599.8

1649.8

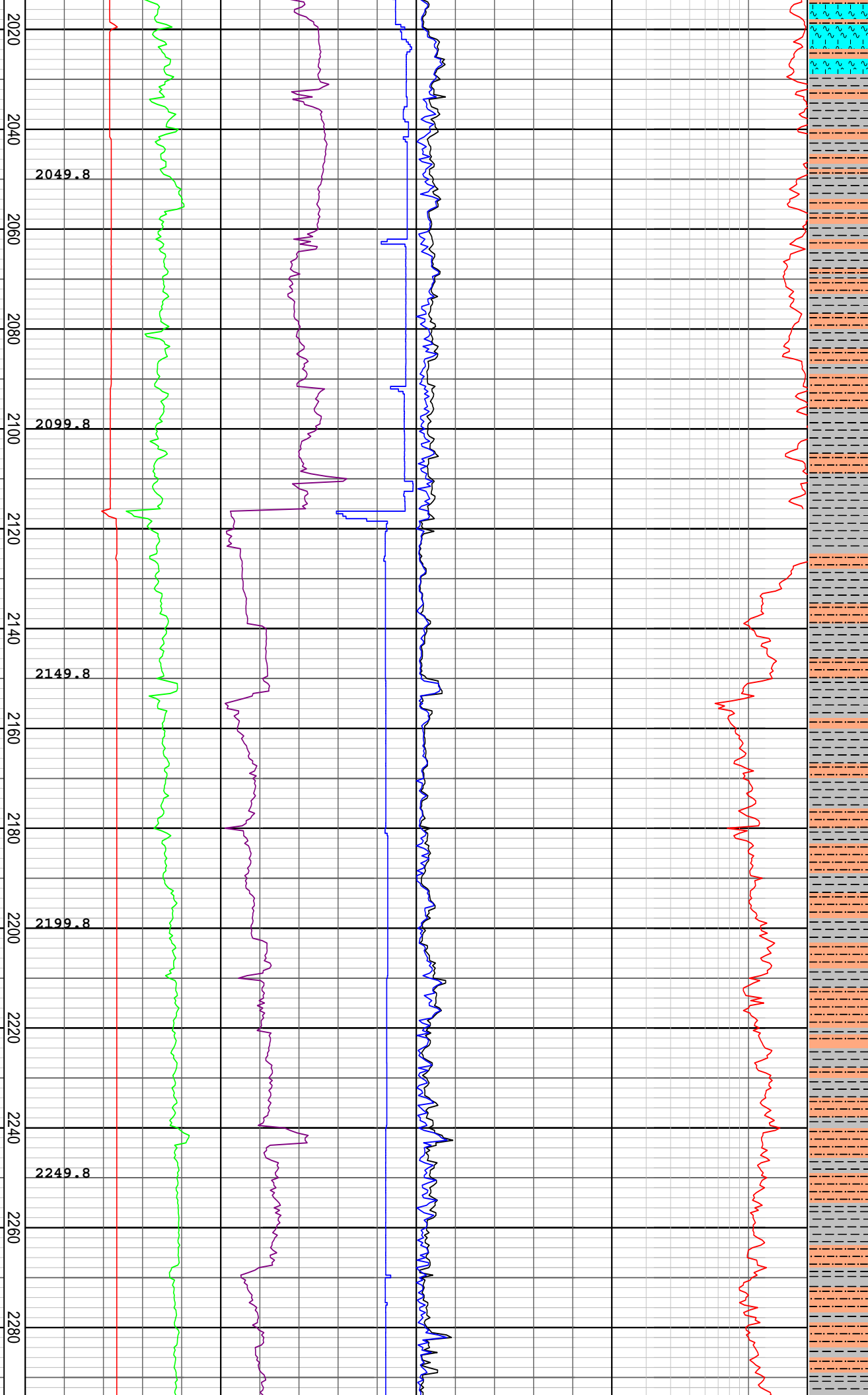
1699.8



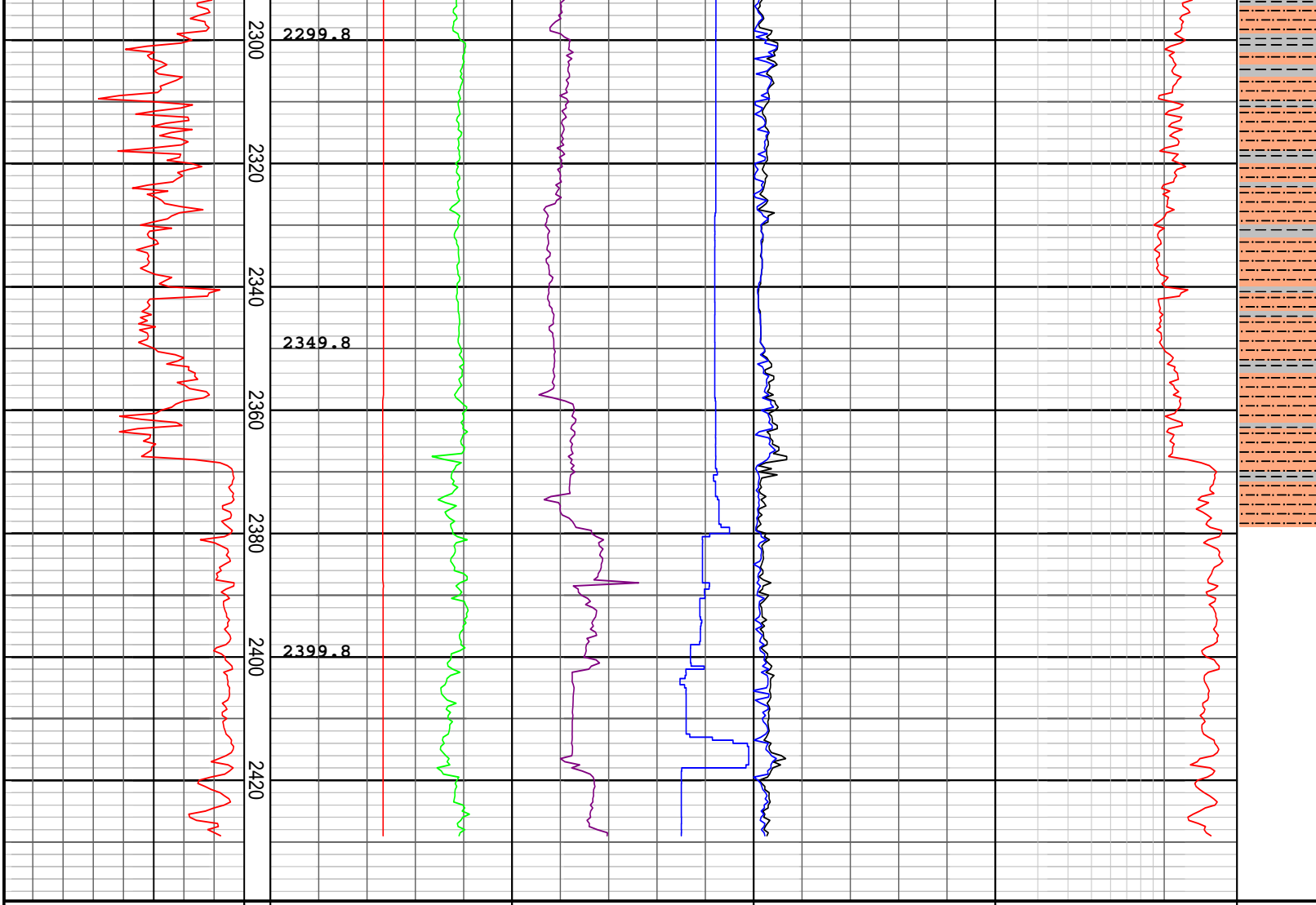


Jets: 4x14, 1x15  
Depth In: 1998.0  
mMDRT  
Depth Out: 2116.0  
mMDRT  
WOB: 4152 kbf  
RPM: 17-23  
GPM: 501 - 602  
SPP: 2157 - 3842 psi  
16/03/2008

WOB: 18 - 46 kbf  
RPM: 98 - 160  
GPM: 613 - 707  
SPP: 2894 - 4061 psi  
NB5 216 mm (8.5")  
Reed  
Type: RSX519MA6  
Jets: 3x11, 5x14  
Depth In: 2116.0  
mMDRT  
Depth Out: xxxx mMDRT  
Drilled xxx in x.x hrs  
Grade: X-X-X-x







**DRILLING DATA PLOT**

<b>ROP (m/hr)</b> 200   175   150   125   100   75   50   25	<b>FLOW IN (gpm)</b> 300   600   900   1200   1500	<b>RPM Avg</b> 70   140   210   280   350	<b>TORQUE Max (kft-lb)</b> 5   10   15   20   25	<b>DXC</b> 0.2   2	<b>INTERPRETED LITHOLOGY</b>
<b>MD meters 1:1000</b>	<b>STANDPIPE (psi)</b> 1000   2000   3000   4000   5000	<b>WOB Avg (klbs)</b> 16   32   48   64   80	<b>TORQUE Avg (kft-lb)</b> 5   10   15   20   25		
	<b>VDEPTH</b>				